

ABOUT THE ISSN

Community Catalyst Partners and its International Studies Schools Network (ISSN) integrate global learning across the curriculum through a unique combination of professional development, globally focused curriculum tools, project-based learning, and authentic assessment. As a professional network of a growing number of preK-12 schools around the United States and internationally, ISSN schools, especially those in primarily socioeconomically disadvantaged urban areas, enjoy higher levels of student engagement and academic achievement.

The ISSN work contributes toward solving one of the most complex issues facing educators today: how to prepare all students for employability and citizenship in a global era. In our interconnected world, the ability to appreciate diverse cultures and analyze complex international issues is essential, along with having the knowledge, skills and dispositions to be difference makers on a local and global scale. Students need to be globally competent in order to prosper within a global economy, thrive amid diversity, and take on the world's seemingly intractable problems.

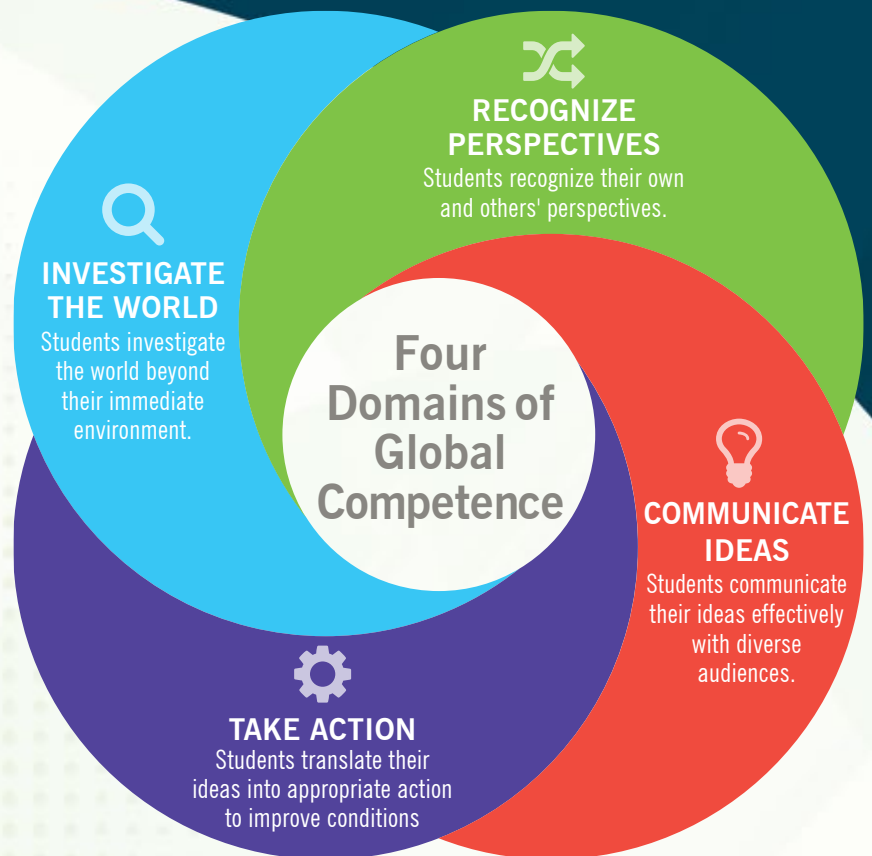
WHAT WE DO

We build capacity. Using an assets-based approach, our transformational model develops educators' capacity for project-based learning and performance-based assessment.

We lead learning. Through peer collaboration, a series of shared learning opportunities and best practices, the ISSN provides administrators, educators, and students at our partner schools opportunities to share and learn from one another as they prepare to make an impact in society.

We integrate with what you are already doing. We don't mandate prescriptive curriculum, initiatives, or policies. Global competence is not another program to add on top of what you are already doing. It is the framework and organizing principle for integrating best practices and creating a learning environment that truly meets the needs of the students of today and tomorrow.

GLOBALLY COMPETENT STUDENTS ARE ABLE TO:



OUR GLOBAL SCHOOL DESIGN MODEL

We work with educators to integrate global competence across the school environment through our unique model, the Global School Design. Partner schools use the Global School Design to guide their global competence vision, establish priorities, and set goals. Then they choose from an array of resources and professional development opportunities to suit their unique goals and circumstances.



OPTIONS INCLUDE:



Teaching and Learning Resources.

Curriculum, instruction, and assessment resources that educators can use to integrate global competence across subject areas and age levels.



Consulting and Workshops. Intensive professional development workshops and targeted customized coaching provide multiple opportunities to apply and refine new concepts.



Online Community of Practice. An online professional community with collaborative tools and discussions about events, experiences, and ideas.



Network Learning Series. Regular gatherings of district, school and student leaders designed to build their capacity to lead, learn and sustain an effective globally focused school or program.



Program Reviews. A whole-school site review process that provides feedback on implementation of the Global School Design model.

JOIN OUR INTERNATIONAL LEARNING COMMUNITY AND NETWORK

One of the most impactful benefits of working with the ISSN is the opportunity to be part of an international learning community dedicated to sharing practice around common goals. The ISSN invites schools, districts, and educational organizations to join our network of schools from across the world in committing to the important work of educating for global competence. Partners can choose from a variety of

opportunities and resources to increase educators' capacities to develop global competence in young people. These opportunities are designed to be customized, curated, and packaged in a wide variety of ways to suit the unique goals and circumstances of any partner organization. We look forward to speaking with you to discuss your needs and develop an implementation plan.